



SURF COAST ENERGY GROUP
5 YEAR STRATEGIC PLAN
2022-2026



www.sceg.org.au

We acknowledge
the Wadawurrung Traditional Owners
as the custodians of the land
on which we are lucky enough to live, work and play.

We pay our respects to Wadawurrung people,
their Elders, past, present and emerging.

President's Note

The problem is simple. Humanity's global footprint is vastly larger than what the planet can support. Scientists call this 'Ecological Overshoot'. According to the Global Footprint Network, the current global economy requires 1.75 earths. And if we all lived like Australians do, it's closer to 5 earths! Given we have just one planet, there's a clear gap here and a problem that we need to solve... quickly.

What does that mean for us here in the Surf Coast? It means we need to respond at a local level with a thoughtful, strategic and integrated approach. If we all do this, and do it quickly, we can help to ensure that future generations can also enjoy the beautiful natural environment that we are lucky enough to live within. Every one of us can make a difference and every action we take can be another step in the right direction. But our actions can be even more powerful when we work together as a community.

SCEG's five year strategic plan is a rallying call for the community. It considers conserving nature, decarbonising our energy systems and creating a sustainable urban environment as key opportunities that we can all work on together. Creating a sustainable community model fit for the 21st century requires as many of us to get involved as possible. If you've always wanted to contribute to local sustainable action, but not known where to start, we invite you to get in touch by sending us an email to info@sceg.org.au. SCEG looks forward to having that conversation with you.

Together we can make a difference.

Graeme Stockton

President Surf Coast Energy Group

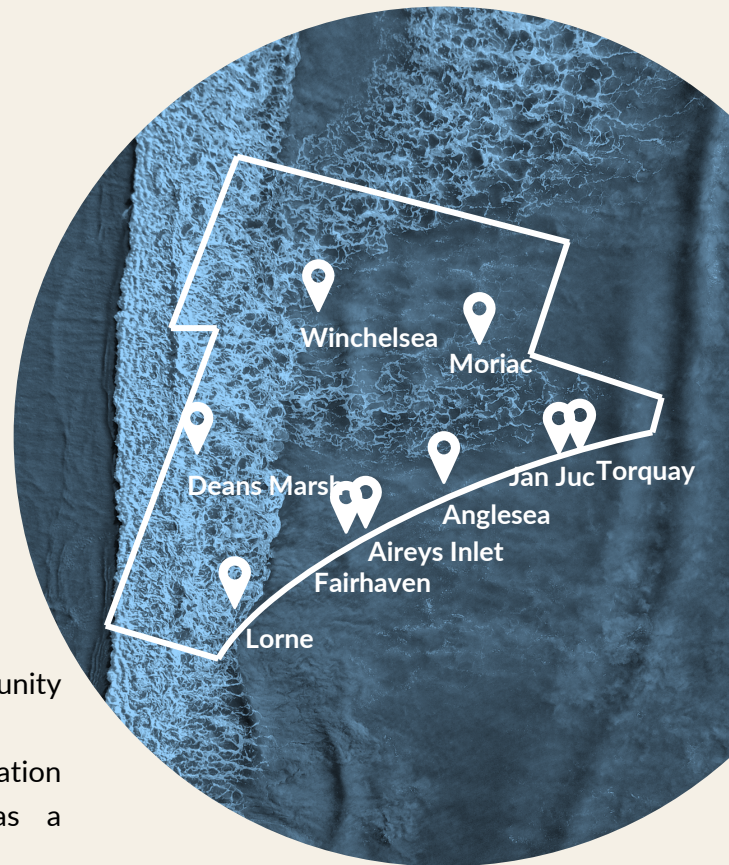
ABOUT

Local Leadership Since 2008

Since 2008, SCEG has provided local leadership and action in our community on climate, energy and related environmental challenges. With our financial members, committee members, volunteers and partners, we connect our community on these environmental issues to make meaningful contributions right across the Surf Coast Shire.

Some examples of SCEG's past community work include:

- Petitioning for Surf Coast Shire's declaration of a climate emergency, which was a successful motion passed in 2019.
- In 2014, SCEG's largest event was the Growth Forum at the Quiksilver Auditorium, where over 200 people attended discussing important issues such as: population growth, climate change and biodiversity loss, and the implications both locally and globally.
- We have created blueprints for community solar energy gardens, engaged hundreds of school children in solar projects, lobbied our elected leaders for stronger clean energy targets, and have carried the conversation on climate for more than a decade.
- And more recently, the Victorian Government overturned a planning decision that would have seen hundreds of new houses built in the Spring Creek area. SCEG worked in partnership with the Greater Torquay Alliance to successfully lobby on that issue.



STRATEGIC DIRECTION

To set the strategic direction for SCEG's next 5 years of work in environmental engagement and leadership in the Surf Coast community, we have developed a long-term aspirational vision as well as a set of focus areas, roles and operating principles to guide our work.

OUR VISION

A clean, green, protected and connected Surf Coast.

OUR FOCUS AREAS

Energy Transition &
Decarbonisation



Thriving
Natural Environment



Sustainable
Urban Environment

OUR ROLES

Thought Leader

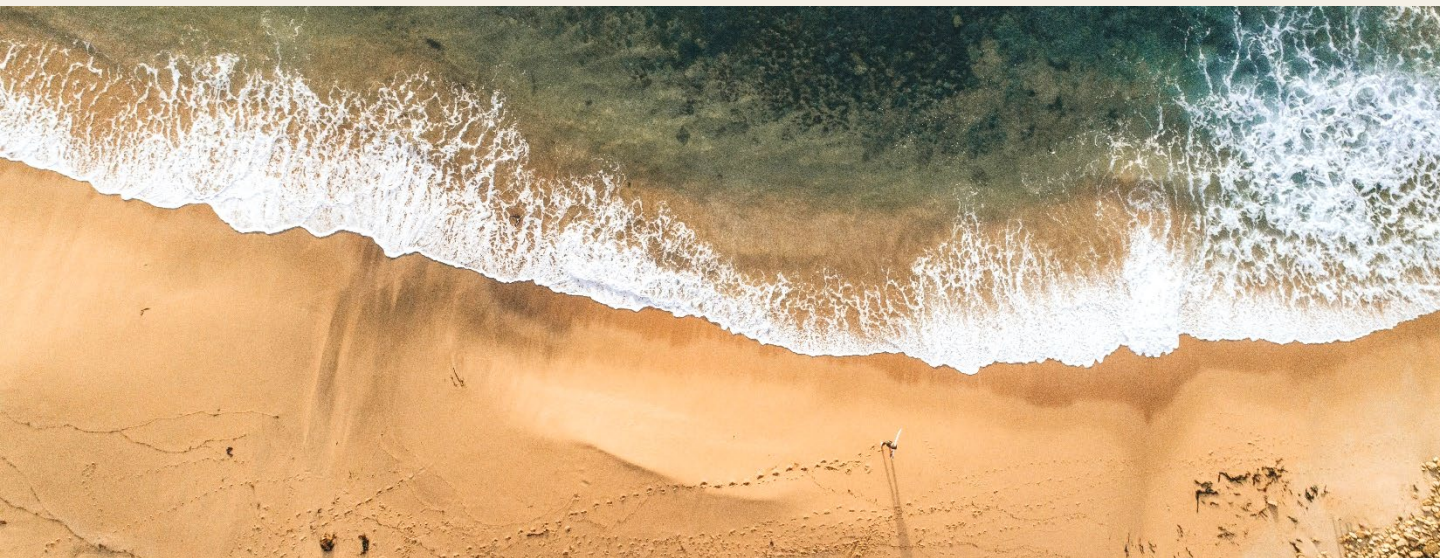


Connector

Doer



Enabler

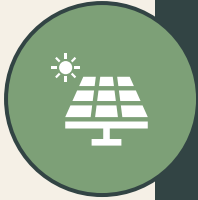


OUR OBJECTIVES

For each of our focus areas, we have supporting objectives that are linked to the Sustainable Development Goals* and to the One Planet Living Framework*. See below.

ENERGY TRANSITION & DECARBONISATION

- E1: Reduce energy consumption in the community
- E2: Generate and store renewable energy onsite across residences, business and organisations on the Surf Coast
- E3: Import / export renewable energy
- E4: Transition from fossil fuel use to renewable electricity
- E5: Sequester carbon through community projects



THRIVING NATURAL ENVIRONMENT

- N1: Galvanise community, business, govt sectors on the importance of nature on land and sea in the Surf Coast Shire (SCS)
- N2: Protect Spring Creek
- N3: Encourage re-wilding / nature protection / restoration projects across SCS and ocean



SUSTAINABLE URBAN ENVIRONMENT

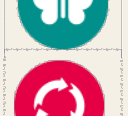
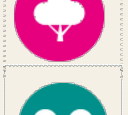
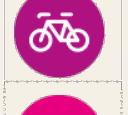
- U1: Increase Sustainable building & urban planning / design within SCS
- U2: Advocate/ support SC community to respond to unsustainable development (i.e planning issues)
- U3: Promote the role of green infrastructure / supporting through stewardship
- U4: Promote behaviour change towards waste reduction, circular economy & waste-related emissions reduction
- U5: Promote sustainable water use practices within SCS



SDGs*



OPL*



*See appendices for details

OUR FY22-23 PRIORITIES

1

Major Projects

This work stream involves delivering several major projects over the next 1-2 years.

Detailed Activities	Focus Area	Objective	Role	Timing
Barwon Solar Schools	Energy	E2	Doer	2022
Facilitate local microgrid projects	Energy	E3	Connector, Enabler	2022
Spring Creek Valley Conservation and Restoration	Nature	N2	Doer	2022/23
Linear Reserve to Bellbrae Primary School	Nature	N3	Enabler, Connector	2022
Community Engagement Tool – e.g. Environmental footprint calculator	All	All	Enabler, Connector, Doer	2022

2

Community Engagement

This work stream involves building a series of events, competitions, tips/tricks and ways for the community to participate over the course of 12 months. A list of example activities are shown below.

Detailed Activities	Focus Area	Objective	Role	Timing
Energy efficiency assessments, audits and upgrades	Energy	E1	Connector	2022
Promote clean energy programs, including bulk buys for solar, EVs, energy efficient assets and green power.	Energy	E1,E2	Connector	2022
Promote community biodiversity monitoring	Nature	N1	Connector	2022
Promote nature-based experiences in the Surf Coast	Nature	N1	Connector	2022
Waste minimisation tips and tricks	Urban	U4	Thought Leader	2022
Share thought leadership on sustainable homes, e.g. promoting benefits of trees and nature in the urban environment.	Urban	U1	Thought Leader	2022
Engage the community to participate in activities and join as SCEG members and sub-committee members	All	All	Connector	2022

3

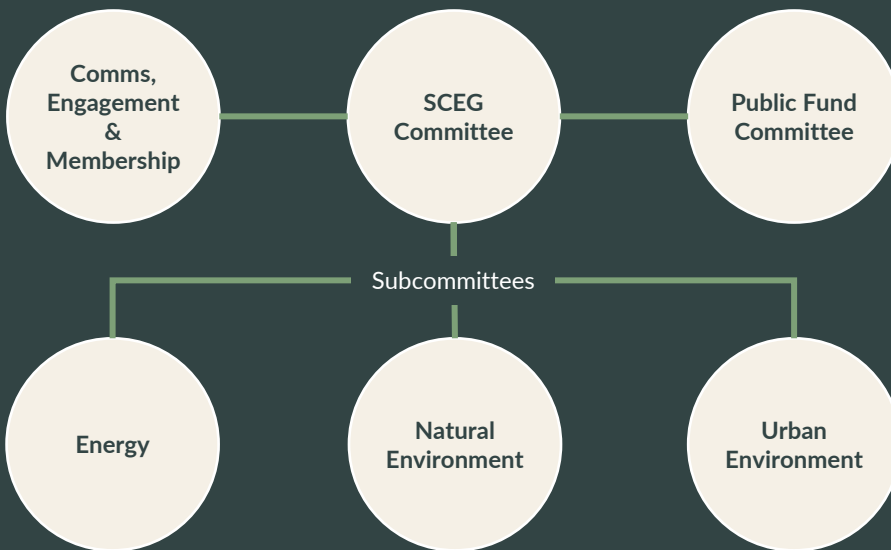
Community Advocacy

This work stream involves being the voice of the community and supporting environmental values when it comes to community issues that impact any of our focus areas. Including:

Detailed Activities	Focus Area	Objective	Role	Timing
Energy and decarbonisation of the economy	Energy	E1,E2,E3, E4,E5	Thought Leader, Enabler	Ongoing
Natural environment and biodiversity	Nature	N1,N2,N3	Thought Leader, Enabler	Ongoing
Sustainable urban environment and waste management	Urban	U1,U2,U3, U4,U5	Thought Leader, Enabler	Ongoing

OUR ORGANISATION

To support SCEG's new strategic direction, we have structured the organisation to deliver on key goals for both the organisation as a whole and for the key focus areas to which we wish to contribute. We have a dedicated team of passionate volunteers, each of whom contributes to one or more functions within SCEG to deliver on our goals.



If you'd like to get involved by becoming a member, a sub-committee member or volunteer for some of our projects, we invite you to get in touch by sending us an email to info@sceg.org.au.

OUR PARTNERS & SUPPORTERS

SCEG partner with other organisations to form stronger alliances for meaningful action. Our partners includes funders, supporters and alliances and our work would not be possible without them.

With special thanks to the generous partners funding our current projects:



FRRR
Foundation for Rural
Regional Renewal



patagonia[®]

The below are just a handful of our partners that are helping us work towards our 2022 goals:

- Barwon Region Alliance for Community Energy (BRACE)
- Cooperative Power
- Corangamite Catchment Management Authority (CCMA)
- DELWP
- Geelong Media
- Greater Torquay Alliance (GTA)
- Monash Net Zero Initiative
- Rewilding Freshwater Creek
- Surf Coast and Inland Plains Network (SCIPN)
- Surfers Appreciating the Natural Environment (SANE)
- Surfrider Foundation
- Torquay & District Landcare

APPENDIX 1 - 5 YEAR ACTION PLAN

Focus Area	Activity	Objective	Role	<12 mths	> 12 mths
 <p>Energy Transition & Decarbonisation</p>	Introduce energy efficiency assessments to the Surf Coast Community	E1	Connector	✓	
	Encourage detailed energy audits & upgrades	E1	Connector		✓
	Encourage renewable energy purchases through bulk buy programs	E2	Connector		✓
	Increase renewable energy use by promoting pathways to Surf Coast community	E2	Connector	✓	
	Promote renewable installation projects, incl Barwon Solar Schools Project	E2	Doer	✓	
	Promote clean energy purchases using GreenPower accredited energy retail products	E3	Connector	✓	
	Partner with cooperative energy retail partners	E3	Connector, Enabler		✓
	Facilitate neighbourhood battery storage projects	E3	Thought Leader, Connector		✓
	Facilitate microgrids	E3	Connector, Enabler	✓	
	Encourage households to transition from fossil fuel to renewable electricity use, especially for heating.	E4	Connector		✓
Encourage transition from fossil fuel based transport	E4	Connector		✓	
Monitor the decarbonisation of rewilding projects.	E5	Doer	Ongoing	Ongoing	
 <p>Thriving Natural Environment</p>	Support community-based biodiversity monitoring (Citizen Science)	N1	Enabler	✓	
	Promote nature-based experiences in the Surf Coast	N1	Connector	✓	
	Engage Traditional Owners on restoration projects	N1	Connector, Enabler	Ongoing	Ongoing
	Link SC organisations focused on stewardship of nature	N1	Connector		✓
	Facilitate improve management outcomes on private properties in Spring Creek Valley	N2	Connector, Enabler	Ongoing	Ongoing
	Build local stewardship opportunities	N2	Doer	Ongoing	Ongoing
	In Spring Creek	N2	Doer	✓	
	Linear Reserve to Bellbrae Primary School	N2	Doer	✓	
	Direct engagements with the community on Protect Spring Creek effort	N2	Doer	Ongoing	Ongoing
	Formalise a community land trust in order to purchase suitable parcels of land within the Spring Creek Residential Development area	N2	Thought Leader	✓	
	Develop management framework for community owned assets	N2	Thought Leader	✓	
	Promote sustainable economic activity compatible with nature conservation	N2	Thought Leader	✓	
	Identify/prioritise sites for rewilding/protection	N3	Thought Leader		✓
	Facilitate nature biodiversity corridors, landscape alliances, etc	N3	Connector		✓
	Kickstarting rewilding/protection programs	N3	Enabler		✓
 <p>Sustainable Urban Environment</p>	Investigate opportunities to influence design of new urban areas, technologies used (eg streetlighting), future-proofing,	U1	Thought Leader, Enabler		✓
	Connecting community with appropriate community organisations	U2	Connector	✓	
	Supporting community to actively engage in planning process and decision-making	U2	Enabler		✓
	Creating / maintaining/ improving natural habitat spaces /corridors within and surrounding urban areas	U3	Thought Leader		✓
	Obtain local data on waste management and volumes	U4	Thought Leader	✓	
	Decide on an ultimate vision for shire waste/best practice goals	U4	Thought Leader		✓
	Advocate directly to Shire relating to most prominent waste issues	U4	Thought Leader		✓
	Create a quarterly calendar of short-term challenges & focal topics	U4	Enabler, Connector		✓
	Increase SCEG's partnerships and relationships with industry-specific bodies	U4	Connector		✓
	Draw talent from local built environment professionals to join us to build capacity - eg architects, green builders, engineers, landscape, planning	U5	Connector	✓	
	Promote efficient use of water in urban areas	U6	Thought Leader		✓
	Ensuring sustainable supply of water into the future	U6	Thought Leader, Connector		✓

APPENDIX 2 – SUSTAINABLE DEVELOPMENT GOALS

A summary of the Sustainable Development Goals is provided below, with more information available here: <https://sdgs.un.org/goals>



APPENDIX 3 – ONE PLANET LIVING

A summary of the One Planet Living Framework is provided below, with more information available here: <https://www.bioregional.com/one-planet-living>



Health and happiness

Encouraging active, social, meaningful lives to promote good health and wellbeing



Equity and local economy

Creating safe, equitable places to live and work which support local prosperity and international fair trade



Culture and community

Nurturing local identity and heritage, empowering communities and promoting a culture of sustainable living



Land and nature

Protecting and restoring land for the benefit of people and wildlife



Sustainable water

Using water efficiently, protecting local water resources and reducing flooding and drought



Local and sustainable food

Promoting sustainable, humane farming and healthy diets high in local, seasonal organic food and vegetable protein



Travel and transport

Reducing the need to travel, encouraging walking, cycling and low carbon transport



Materials and products

Using materials from sustainable sources and promoting products that help people reduce consumption



Zero waste

Reducing consumption, reusing and recycling to achieve zero waste and zero pollution



Zero carbon energy

Making buildings and manufacturing energy-efficient and supplying all energy with renewables

APPENDIX 4 – THINK RESILIENCE

We aim to keep the 4E's of Ecology, Economy, Energy and Equity front of mind in a systems thinking approach to all that we do. A link to the Think Resilience program is provided here: <https://education.resilience.org/>

4E's OF SUSTAINABLE COMMUNITIES

Ecology



Economy



Energy



Equity

